

Identification of slow and advanced learner

The institute has implemented a comprehensive mechanism to assess and address the learning needs of students. This includes the identification of slow and advanced learners through the evaluation of their previous qualifying exam performance. Slow learners are identified if they secure less than 50% of marks in the CIE. Advanced learners are identified if they score more than 80% in the previous qualifying exam.

To support slow learners, the institute provides continuous monitoring throughout the academic year, remedial classes and mini assignments. Advanced learners are given opportunities for shared responsibility in curricular and co-curricular activities, participation in extension activities, nomination for student General Secretary and college committees, participation in seminars and conferences and publications. These initiatives aim to cater to the specific needs of both slow and advanced learners, promoting their academic growth and overall development.



Dr. V. G. SANGAM

PRINCIPAL

BLDEA's Vachana Pitamaha Dr. P. G. Halakatti
College of Engineering & Technology,
VIJAYAPUR-586103 (Karnataka)

Slow Learners

- Slow learners are identified based on Semester End Examination (SEE) marks, Continuous Internal Evaluation (CIE) test marks, mentoring and regular interaction with students.
- List of slow learners obtained is shared with respective student mentors and course coordinators for the further monitoring and improvement of the student performance.
- The department time table includes exclusive schedule for remedial classes and are conducted on weekly basis for slow learners to improve their academic performance.
- Mentors will interact with slow learners and motivate and guide them to improve their overall performance.

Fast Learners (Bright Students)

- Fast learners are identified based on Semester End Examination (SEE) marks, Continuous Internal Evaluation (CIE) test marks, mentoring and regular interaction with students.
- Fast learners are encouraged to take up mini-projects in place of regular assignment work to uplift their learning ability.
- They are encouraged to participate in workshops, quiz, STTP etc for improving their skills.
- Fast learners are encouraged and will be supported to publish papers and to participate in state and national level technical competitions.
- Fast learners are encouraged to participate in most of the activities-events conducted by the department-institute.

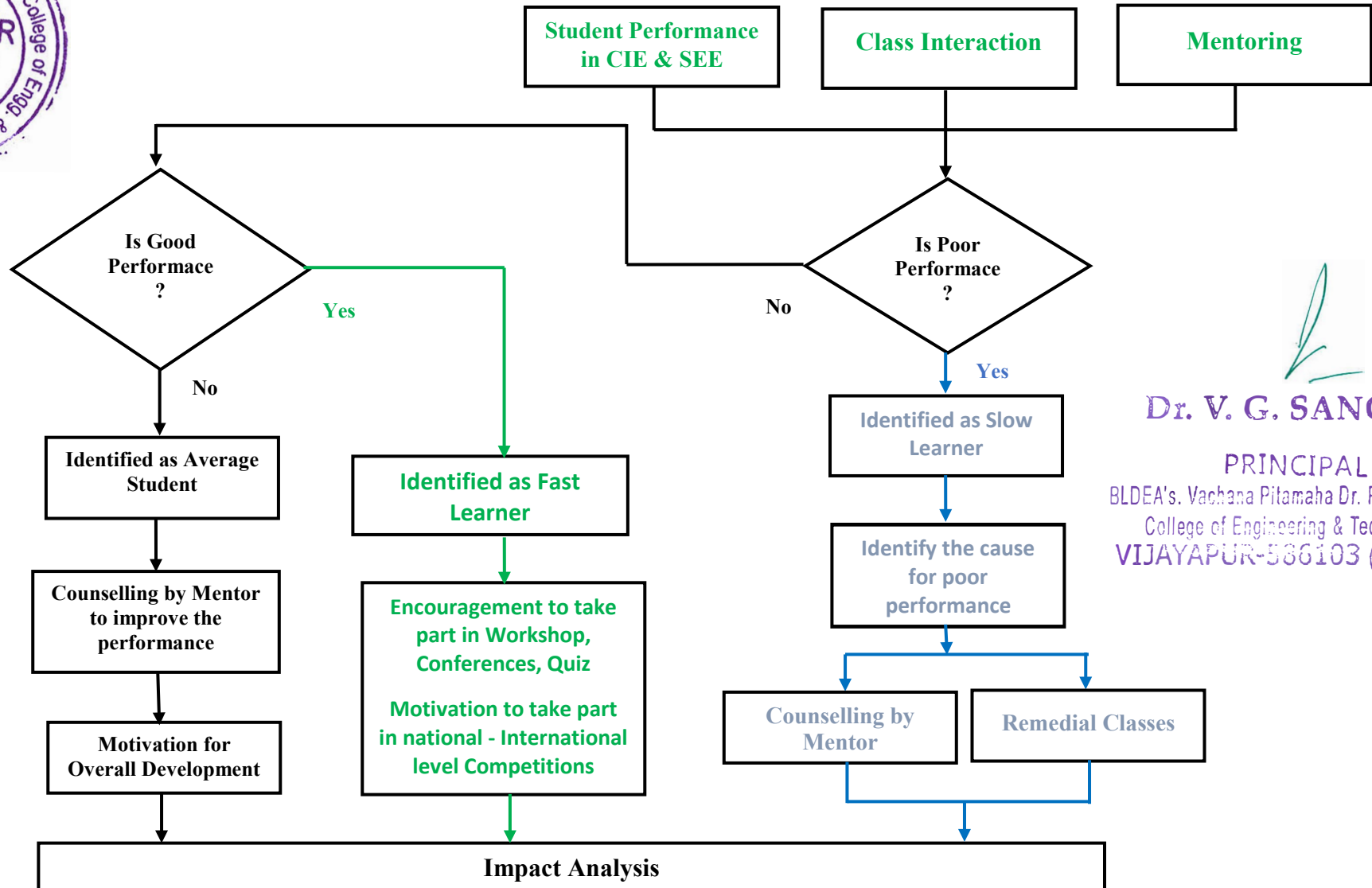


Dr. V. G. SANGAM

PRINCIPAL
BLDEA's, Vachana Pitamaha Dr. P. G. Halakatti
College of Engineering & Technology,
VIJAYAPUR-586103 (Karnataka)



Process to Identify Slow and Fast Learner




Dr. V. G. SANGAM
PRINCIPAL
BLDEA's Vachana Pitamaha Dr. P. G. Halakatti
College of Engineering & Technology,
VIJAYAPUR-586103 (Karnataka)